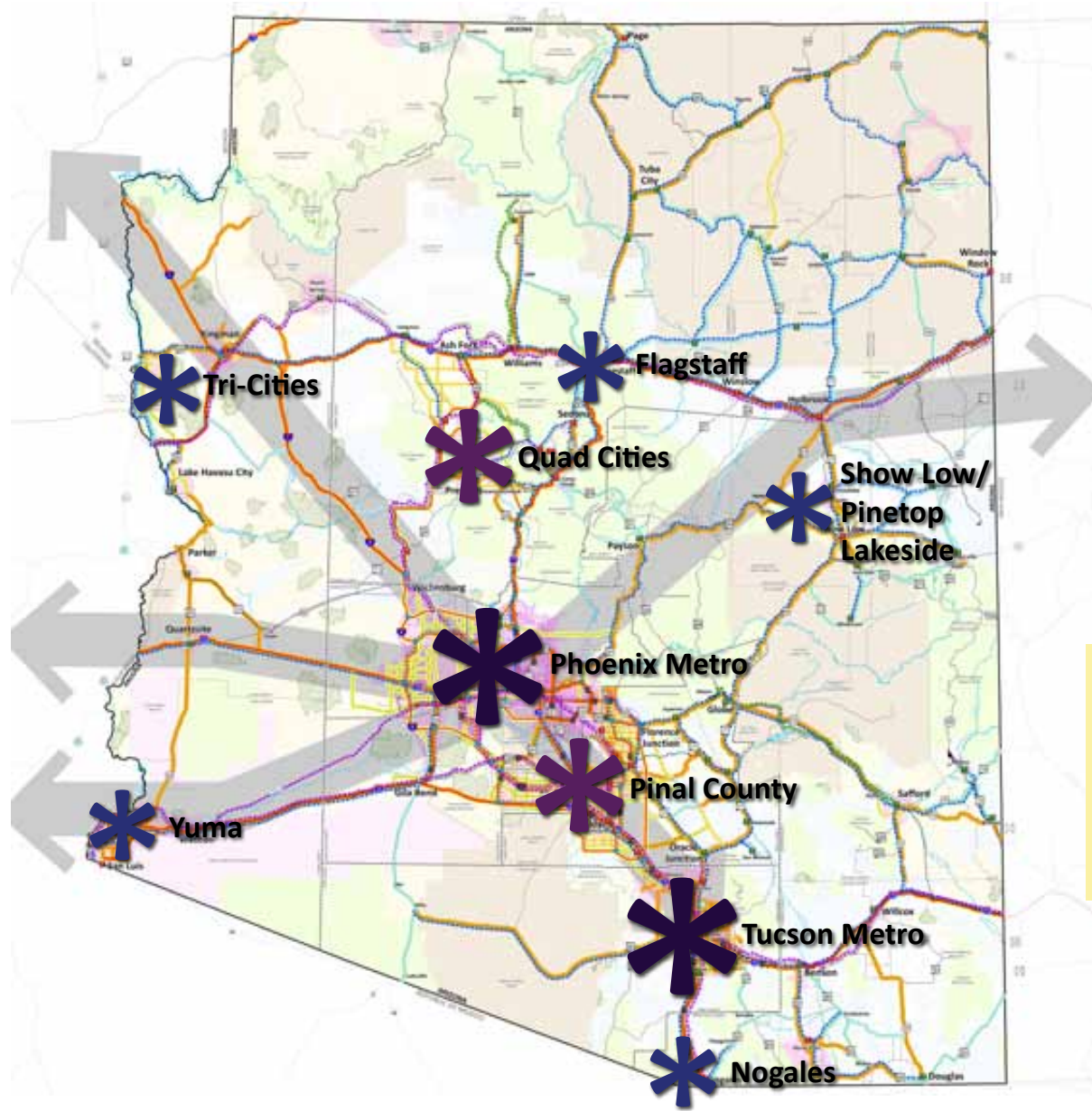






2050 Key Economic Activity Centers



-  Large Metropolitan Area
-  Medium Metropolitan Area
-  Small Metropolitan Area
-  Sun Corridor Megapolitan Region

The Recommended Framework connects Arizona's key population and employment centers with a multimodal transportation system.

Tourism

Where do people travel in Arizona? Why do they visit?



»» Grand Canyon



»» Sedona



»» Prescott Area



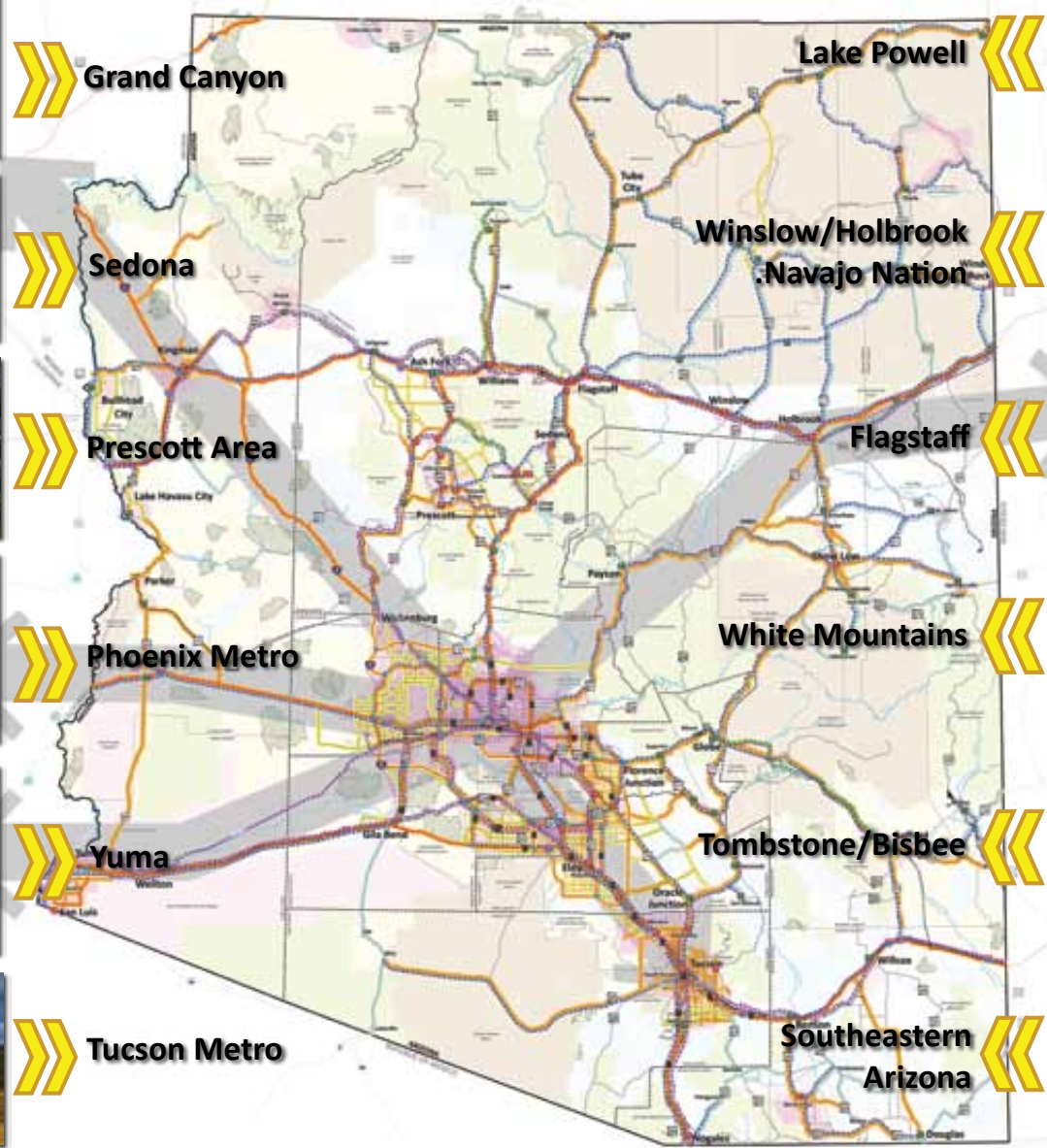
»» Phoenix Metro



»» Yuma



»» Tucson Metro



Lake Powell



Winslow/Holbrook
Navajo Nation



Flagstaff



White Mountains



Tombstone/Bisbee



Southeastern
Arizona

Economic Vitality

Build a seamless transportation system that efficiently moves people and goods to ensure that Arizona's economy is competitive and thriving. Work toward an integrated system of roads, transit, passenger rail, non-motorized modes, aviation, and freight options to ensure Arizona's economic vitality. The Recommended Framework:



- Links **regional commercial and employment activity centers** through multimodal transportation options.



- Develops a **multimodal transportation system** that supports current and emerging statewide economic opportunities.



- Provides **intermodal freight facilities** that accommodate movement between air, rail and highway vehicles.



- Improves and expands high-priority **rail and highway freight corridors**.

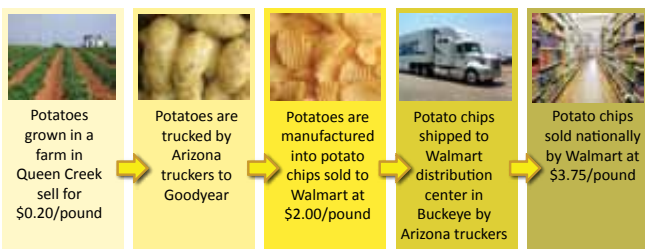


- Develops interstate and international transportation connections, including **enhanced border crossings**, that foster economic trade.

Value added manufacturing creates jobs and builds the Arizona economy.

Value-added manufacturing = Taking a raw product and through processing, packaging or marketing increasing its value, and resulting wealth creation for Arizona

FACT: The more value the business process can add to the resources available in Arizona, the more revenue is generated in the local economy and the more jobs created.



Volume of Freight on Major U.S. Corridors

Goods travel all over the U.S. from Arizona



FACT: Agricultural products have far-reaching impacts.



In January, hydroponic tomatoes grown in Cochise County and lettuce grown in Yuma are harvested and shipped by Arizona truckers quickly to Phoenix.

Produce is loaded on a British Airways flight non-stop to London with Arizona produce available to Europeans within 48 hours of harvesting.



British Airways has stated that without this freight, non-stop passenger service from London to Phoenix would not be viable.

Non-stop service from Europe to Phoenix is vital for Arizona's commerce and tourism.

The Recommended Framework connects industrial and employment centers statewide through a network of roads and rail that allows Arizona products to reach national and international markets efficiently.

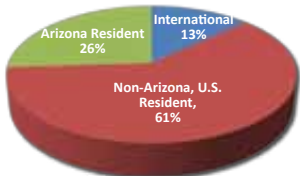
“Tourism is a blue chip industry that is a constant, stabilizing force in our state’s economy.”

Margie A. Emmermann, Director
Arizona Office of Tourism

FACT: Tourism is an important component of Arizona’s economy.

- Direct travel spending in Arizona in 2008 was \$19 billion.
- Arizona hosted 37 million overnight visitors in 2008, roughly equal to 102,000 visitors per day.

2008 Arizona Overnight Visitation

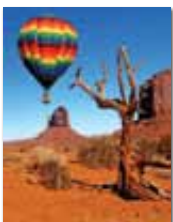
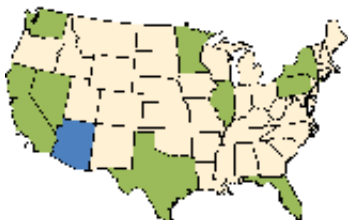


- More than one-half of all spending by visitors in 2008 was for leisure and hospitality services.
- Tax revenue supported by the travel industry is mostly provided by visitors rather than residents.
- Travel spending in Arizona generated 170,000 jobs with earnings of \$5 billion in 2008.



- Top visited National Parks in Arizona in 2008:
 1. Grand Canyon National Park
 2. Glen Canyon National Recreation Area
 3. Lake Mead National Recreation Area
 4. Canyon de Chelly National Monument
 5. Saguaro National Park

- Over 60% of Arizona’s domestic visitors travel by air from the green states shown on the right.



The Recommended Framework connects visitor attractions throughout the state with an efficient multimodal transportation system that allows visitors to stay and play longer, adding revenue to the local and statewide economy and creating jobs.

True or False?

Test your knowledge of freight movement in Arizona



- 75% of the 2005 freight rail tonnage in Arizona was merely passing through the state
- 75% of freight transported in Arizona is carried by truck



- Shipment of freight by rail produces less air pollution and greenhouse gas emissions than shipment by truck
- One mile of freight rail costs \$3 million funded by private industry, compared to an estimated \$15 million, funded by the public, for one mile of highway



- One double-stack container train carries the equivalent of up to 280 trucks
- 46% of all freight delivered to Arizona by rail from out of state is coal



- Food products, including potatoes, count for only 7% of freight delivered by rail to Arizona



- The biggest “commodity” originating in Arizona and traveling out of the state is empty rail cars – trains deliver their loads to Arizona businesses and often leave empty
- In 2007, 120 freight trains per day passed through Kingman, Flagstaff and Winslow