

Central Arizona Regional Transportation Framework

Regional Technical Advisory Team
Meeting No. 2
June 12, 2008

Agenda

- Welcome and Introductions
- Completed Activities
 - Public and Stakeholder Involvement
 - Working Paper No. 2
- Population and Employment Projections
- Critical Needs
- Potential Projects Round Table Discussion
- Next Steps / Questions / Comments
- Adjourn

Stakeholder Interviews Completed

- Apache Junction
- CAAG
- Casa Grande
- Coolidge
- Eloy
- Florence
- Gila County
- Gila River Indian Community
- Hayden
- Globe
- Kearny
- Marana
- Miami
- Oro Valley
- PAG
- Pima County
- Pinal County
- Superior
- Tohono O’odham
- Queen Creek
- Winkelman

Community Workshops and Focus Groups

3 Workshops held in Florence and Globe

- Commercial and Multimodal Transportation
- Transportation
- Business and Development, Environmental

General Themes

- Impacts of growth on transportation - not enough roadway infrastructure to accommodate growth
- Transportation is often an after thought – playing catch-up
- Local and regional transit– bus, HOV, rail
- Protection of natural resources (wildlife, water, nature)
- Tribal coordination

Community Workshops and Focus Groups

Date / Location	Location Specific Comments
Florence March 26 17 attendees	<ul style="list-style-type: none">•Growth is a reality•Generally accepting of new routes•Florence area – has plenty of developable lands
Globe March 27 43 attendees	<ul style="list-style-type: none">•Mixed attitudes towards growth – mixed reactions to new routes•Mixed opinions about bypassing existing communities – hurting economy vs. relieving traffic•Not enough land to develop –land exchanges for economic development purposes are important•Preserve local character and history

Working Paper 2 – Existing and Future Conditions

- Environmental Context
- Land Use
- Existing Roadway System
- Existing Public Transportation System
- Aviation Facilities
- Rail Infrastructure
- Bicycle and Pedestrian
- Programmed Improvements
- Planned Improvements (Unfunded)
- Related Studies and Reports

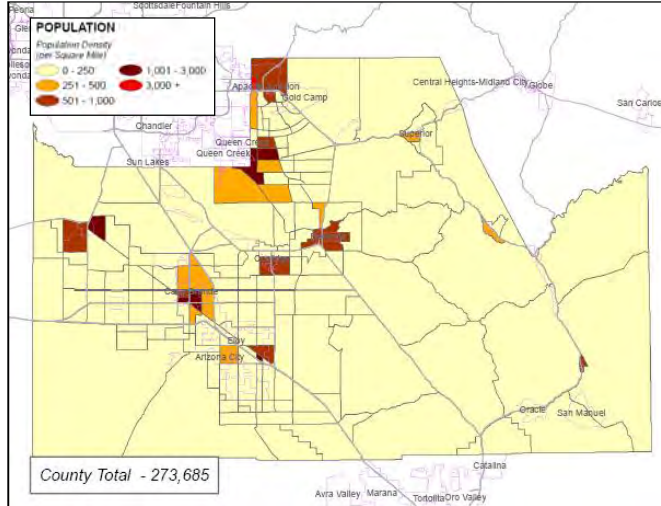
Central Framework Data Sources

- Gila County SATS, 2006.
- Year 2005 Pinal County Travel Demand Model, 2007.
- Pinal County 2.2 Million Population Travel Demand Model, 2007.
- County Population Projections (Arizona Department of Economic Security and COG/MPO Planning Agencies, 2008).
- Census 2000 Data.
- Arizona Subcounty Population Projections, July 1, 2006 to July 1, 2055, by County, Census County Division, Place, and Reservation (Arizona Department of Economic Security, 12/01/06).

Population and Employment Projections

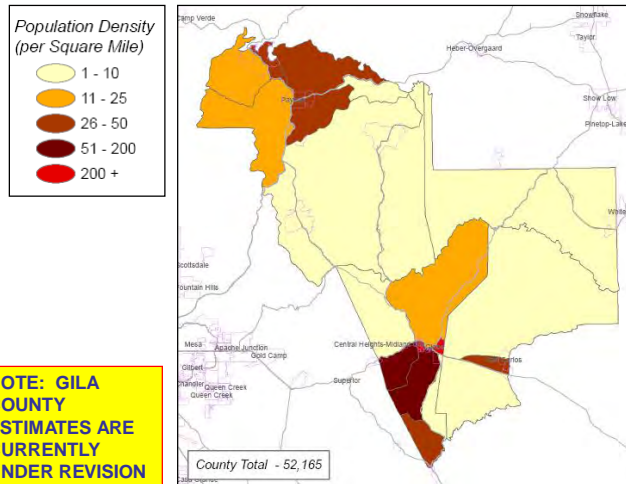
Horizon Year	County	Control Total	Population Distribution Data Sources
2005	Pinal	276,000	Year 2005 Pinal County Travel Demand Model, 2007
	Gila	55,100	•U.S. Census, Arizona D.E.S
2030	Pinal	1,300,000	Growth rate extrapolation and A.D.E.S future projected population distributions
	Gila	70,000	•Gila County SATS, 2006
2050	Pinal	2,200,000	Pinal County Travel Demand Model, 2.2 million scenario, 2007
	Gila	78,300	•Growth rate extrapolation

Base Year (2005) Population Estimate – Pinal County

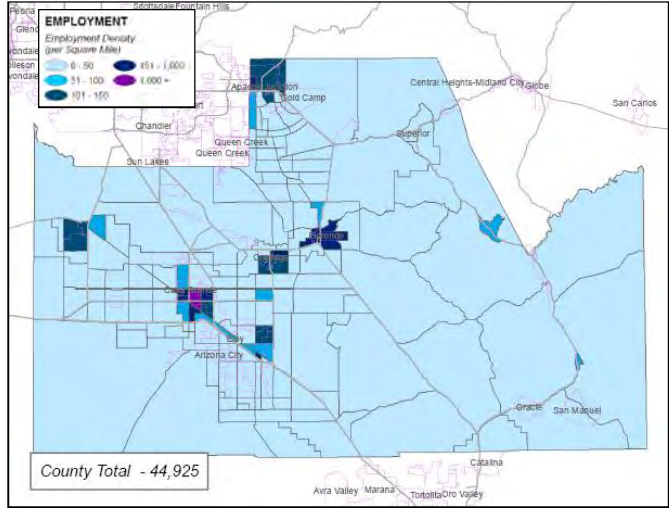


Source: bqAZ Project Team, May 2008.

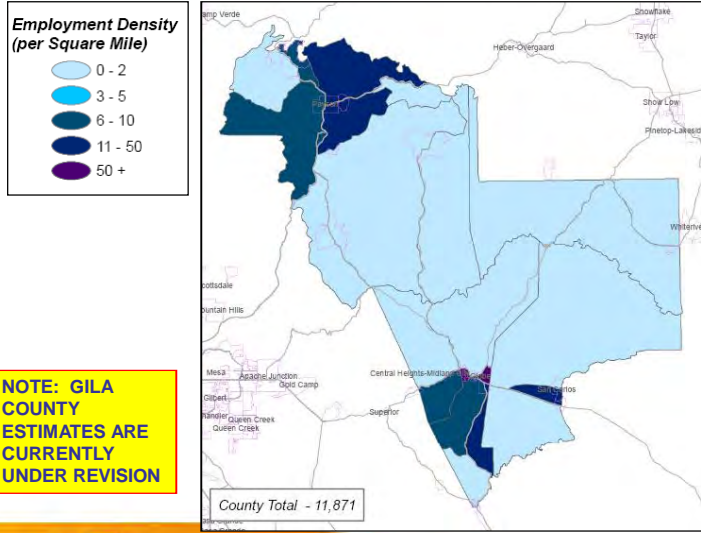
Base Year (2005) Population Estimate – Gila County



Base Year (2005) Employment Estimate – Pinal County



Base Year (2005) Employment Estimate – Gila County



NOTE: GILA COUNTY ESTIMATES ARE CURRENTLY UNDER REVISION

Arizona

Base Year 2005 Estimates

County	Population			Employment		
	DES	bqAZ	bqAZ minus DES (%)*	DES	bqAZ	bqAZ minus DES (%)*
Apache	74,600	74,617	17 (0%)	19,675	19,725	50 (0%)
Cochise	134,800	136,722	1,922 (1%)	36,650	43,935	7,285 (17%)
Coconino	132,800	130,547	-2,253 (2%)	62,100	62,164	64 (0%)
Gila	55,100	57,046	1,946 (3%)	14,000	11,649	-2,351 (20%)
Graham	35,900	36,309	409 (1%)	7,275	7,923	648 (8%)
Greenlee	8,300	9,191	891 (10%)	3,750	3,159	-591 (19%)
La Paz	21,500	22,002	502 (2%)	5,425	10,492	5,067 (48%)
Maricopa (2004)	3,700,000	3,745,821	45,821 (1%)	1,743,000	1,517,175	-225,825 (15%)
Mohave	194,900	194,033	-867 (0%)	52,800	65,879	13,079 (20%)
Navajo	112,700	112,714	14 (0%)	29,250	29,300	50 (0%)
Pima	921,500	924,500	3,000 (0%)	366,600	318,973	-47,627 (15%)
Pinal	276,000	273,685	-2,315 (1%)	44,725	44,925	200 (0%)
Santa Cruz	45,300	47,466	2,166 (5%)	13,025	12,970	-55 (0%)
Yavapai	212,700	199,718	-12,982 (7%)	59,700	59,780	80 (0%)
Yuma	195,500	201,415	5,915 (3%)	50,900	66,416	15,516 (23%)
Arizona	6,121,600	6,165,786	44,186 (1%)	2,508,875	2,274,465	-234,410 (10%)

*expressed as % of bqAZ estimates

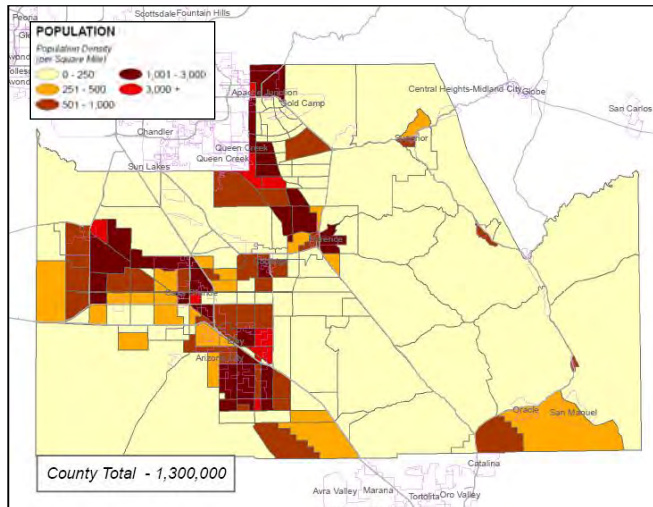
Source: bqAZ Project Team, May 2008.

Variance >= 20%

bqaz Statewide Transportation Planning Framework

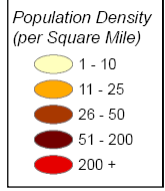
Building a Quality Arizona

2030 Population Estimate – Pinal County

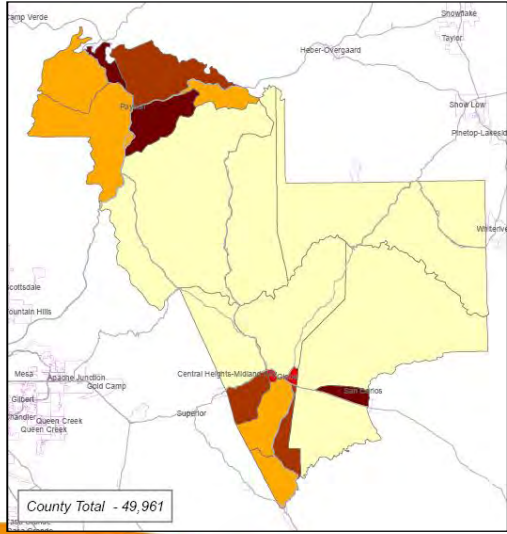


bqaz Statewide Transportation Planning Framework

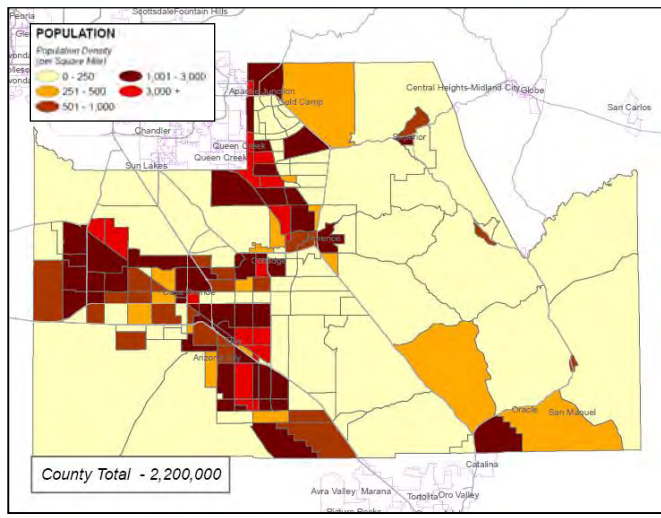
2030 Population Estimate – Gila County



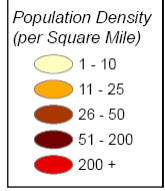
NOTE: GILA COUNTY ESTIMATES ARE CURRENTLY UNDER REVISION



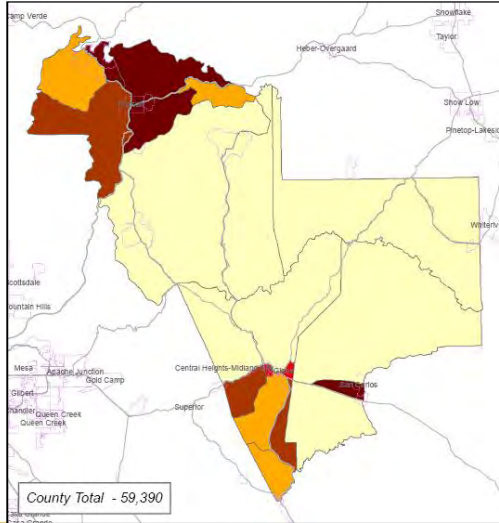
2050 Population Estimate – Pinal County



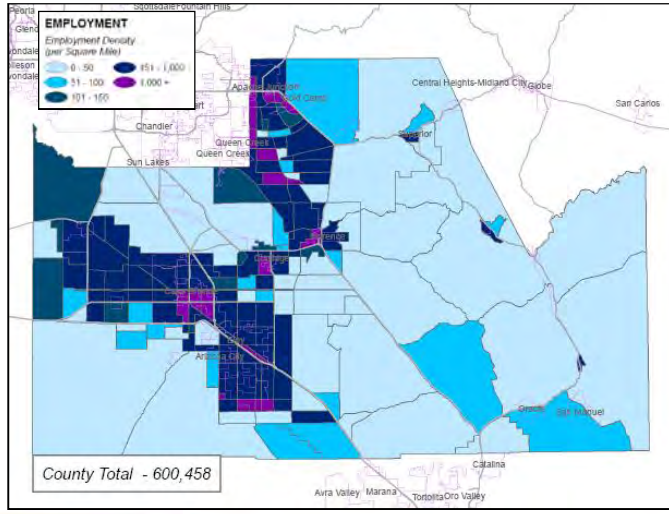
2050 Population Estimate – Gila County



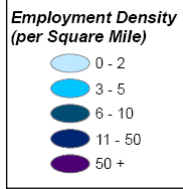
NOTE: GILA COUNTY ESTIMATES ARE CURRENTLY UNDER REVISION



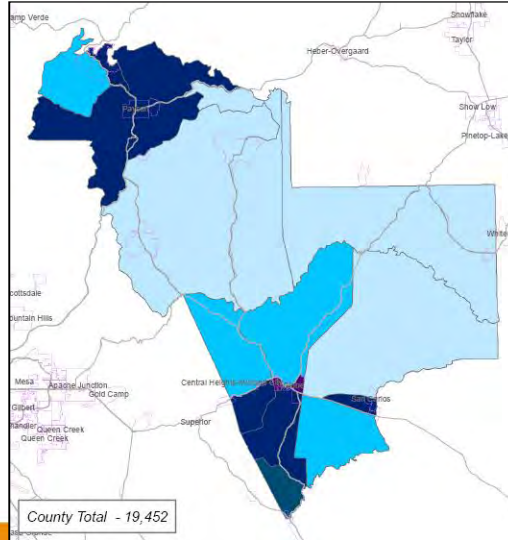
2030 Employment Estimate – Pinal County



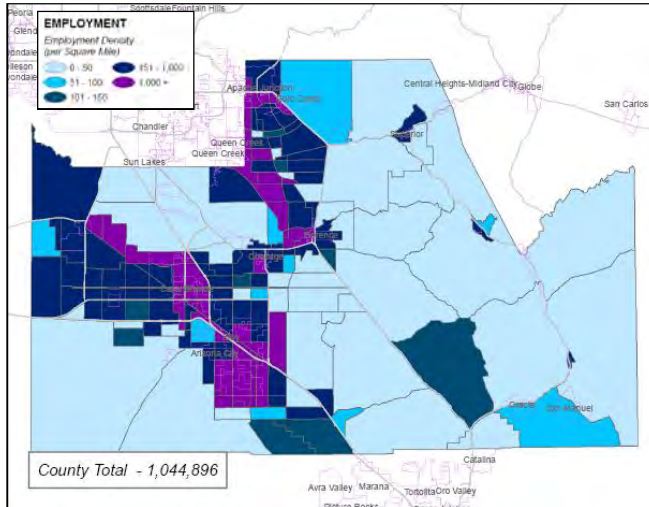
2030 Employment Estimate – Gila County



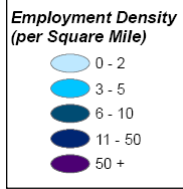
NOTE: GILA COUNTY ESTIMATES ARE CURRENTLY UNDER REVISION



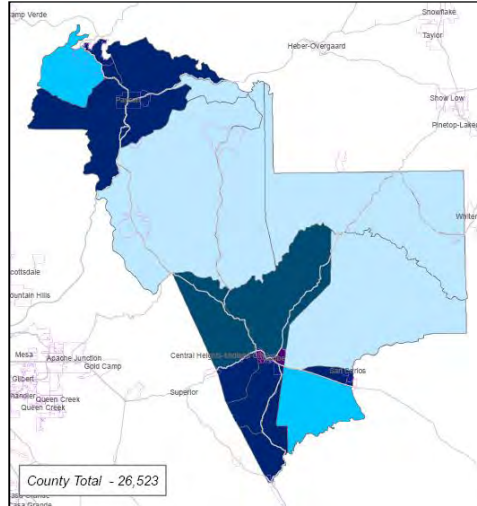
2050 Employment Estimate – Pinal County



2050 Employment Estimate – Gila County



NOTE: GILA COUNTY ESTIMATES ARE CURRENTLY UNDER REVISION



Future Year Population Projections

County	2030			2050			*expressed as % of bqAZ estimates
	DES	bqAZ	bqAZ minus DES (%)*	DES	bqAZ	bqAZ minus DES (%)*	
Apache	93,447	93,482	35 (<1%)	104,248	104,210	-38 (0%)	
Cochise	187,725	187,724	-1 (<1%)	212,822	212,822	0 (0%)	
Coconino	173,829	173,831	2 (<1%)	198,149	198,232	83 (0%)	
Gila	69,879	49,961	-19,918 (29%)	78,274	59,390	-18,884 (32%)	
Graham	44,556	44,559	3 (<1%)	49,929	49,930	1 (0%)	
Greenlee	8,289	8,289	0 (0%)	9,067	9,067	0 (0%)	
La Paz	28,074	27,845	-229 (<1%)	30,909	30,629	-280 (1%)	
Maricopa	6,207,980	6,381,459	173,479 (3%)	7,661,423	-	-	
Mohave	330,581	331,219	638 (<1%)	400,695	407,398	6,703 (2%)	
Navajo	165,647	165,647	0 (0%)	192,360	192,437	77 (0%)	
Pima	1,442,420	1,502,946	60,526 (4%)	1,709,026	1,964,175	255,149 (13%)	
Pinal	852,463	1,300,000	447,537 (53%)	1,302,950	2,200,000	897,050 (41%)	
Santa Cruz	71,033	71,033	0 (0%)	84,708	84,709	1 (<1%)	
Yavapai	355,462	560,048	204,586 (58%)	418,671	1,200,000	781,329 (65%)	
Yuma	316,158	334,777	18,619 (6%)	377,598	395,038	17,440 (4%)	
Arizona	10,347,543	11,232,820	885,277 (9%)	12,830,829	-	-	

NOTE: GILA COUNTY ESTIMATES ARE CURRENTLY UNDER REVISION

Variance >= 20%

2005-2030 Data Comparison

**NOTE: GILA
COUNTY
ESTIMATES ARE
CURRENTLY
UNDER REVISION**

Initial bqAZ employment growth rates are inconsistent with population growth rates

County	bqAZ Population			bqAZ Employment		
	2005	2030	Pct Change	2005	2030	Pct Change
Apache	74,617	93,482	25%	19,725	24,712	72%
Cochise	136,722	187,724	37%	43,935	82,193	87%
Coconino	130,547	173,829	33%	62,164	85,588	38%
Gila	57,046	49,961	-12%	11,649	19,448	67%
Graham	36,309	44,559	23%	7,923	29,524	273%
Greenlee	9,191	8,289	-10%	3,159	6,792	115%
La Paz	22,002	27,845	27%	10,492	24,401	133%
Maricopa	3,745,821	6,381,459	70%	1,517,175	2,814,025	85%
Mohave	194,033	331,219	71%	65,879	129,455	97%
Navajo	112,714	165,647	47%	29,300	43,061	103%
Pima	924,500	1,502,946	63%	318,973	685,983	115%
Pinal	273,685	1,300,000	375%	44,925	600,458	1236%
Santa Cruz	47,466	71,033	50%	12,970	23,727	83%
Yavapai	199,718	560,048	180%	59,780	173,774	191%
Yuma	201,415	334,777	66%	66,416	114,776	73%
Arizona	6,165,786	11,232,820	82%	2,274,465	4,857,917	114%

Source: bqAZ Project Team, May 2008.

bqAZ Projected Population to Employment Ratio

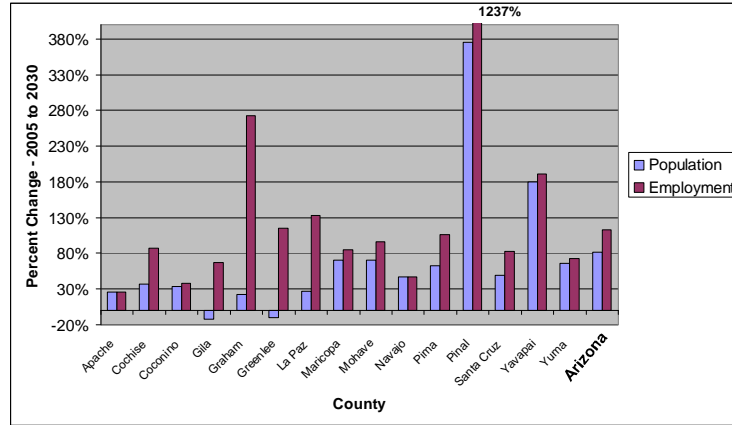
**NOTE: GILA
COUNTY
ESTIMATES ARE
CURRENTLY
UNDER REVISION**

Employment growth is projected to outpace population growth resulting in a lower population-employment ratios

County	Population to Employment Ratio		
	2005	2030	2050
Apache	3.78	3.78	3.78
Cochise	3.11	2.28	2.21
Coconino	2.10	2.03	1.71
Gila	4.90	2.57	2.24
Graham	4.58	1.51	2.77
Greenlee	2.91	1.22	1.22
La Paz	2.10	1.14	0.77
Maricopa	2.47	2.27	-
Mohave	2.95	2.56	1.70
Navajo	3.85	3.85	3.85
Pima	2.90	2.19	2.61
Pinal	6.09	2.17	2.11
Santa Cruz	3.66	2.99	3.23
Yavapai	3.34	3.22	3.27
Yuma	3.03	2.92	2.12
Arizona	2.71	2.33	-

Source: bqAZ Project Team, May 2008.

bqAZ Projected Growth Change: 2005 – 2030



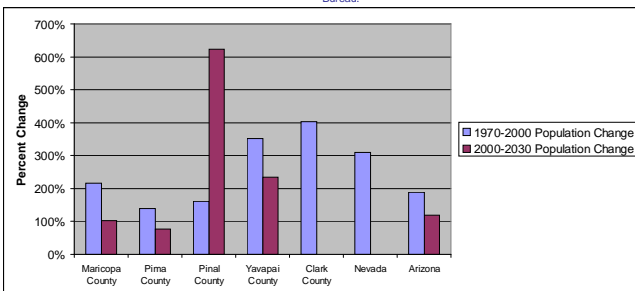
Source: bqAZ Project Team, May 2008.

Population Growth Themes

Place	1970 Census	2000 Census	bqAZ 2030 Projection	1970-2000 Actual Population Change	2000-2030 Projected Population Change
Maricopa County	971,228	3,072,149	6,400,000	216%	102%
Pima County	351,667	843,746	1,500,000	140%	78%
Pinal County	68,579	179,727	1,300,000	162%	623%
Yavapai County	37,005	167,517	560,000	353%	234%
Clark County	273,288	1,375,765	-	403%	-
Nevada	488,738	1,998,257	-	309%	-
Arizona	1,775,399	5,130,632	11,200,000	189%	118%

Source: bqAZ Project Team, May 2008; US Census Bureau.

Pinal County population is projected to grow faster between year 2000 and year 2030 than Clark County (Las Vegas) grew between 1970 and year 2000



Source: bqAZ Project Team, May 2008.

Critical Needs / Transportation Investment Strategy

Round Table Discussion

Potential Projects for Inclusion in Transportation Network Alternatives

- Three multimodal networks alternatives (bundles, packages) will be developed
- Network alternatives will include the following elements:
 - Transit
 - Roadways
 - Freight
 - Air
 - Bicycle/Pedestrian
- Refer to hand out

Next Steps / Questions / Comments

- Working Paper 3 and 4
 - Transportation Alternatives
 - Evaluation Criteria
 - Modeling
- Stakeholder Interviews
- Focus Groups, Round 2

Adjournment

Central Arizona Regional Transportation Framework

Regional Technical Advisory Team
Meeting No. 2
June 12, 2008