

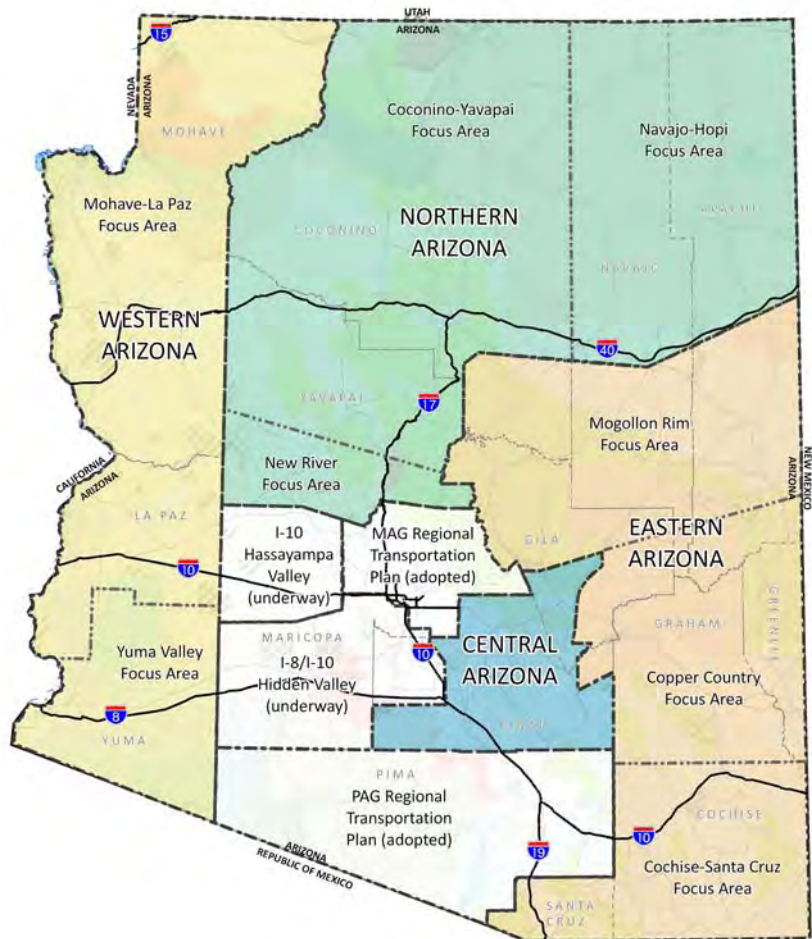


February 6, 2009

Status Report

Overview

The Statewide Framework studies began in the fall of 2007 and are scheduled for completion in the fall of 2009. ADOT is working in cooperation with a wide range of stakeholders throughout the state, including the COGs and MPOs, tribal communities, local governments, interested federal and state agencies, environmental groups, and business interests including the transportation sector. To make the effort manageable, ADOT divided the state into four study areas for regional planning purposes, each of which has been assigned to a different consultant team under the direction of a Management Consultant. Figure 1 illustrates the Central, Eastern, Northern and Western Regions [as well as the Hassayampa Valley and Hidden Valley study areas where framework studies are being completed by the Maricopa Association of Governments (MAG)]. Together, the four regions encompass the entire state except Maricopa County, Pima County, and the Pinal County portion of the Hidden Valley study area. Once the four individual regional studies are complete, the ADOT Management Consultant will develop a comprehensive Statewide Planning Framework based on their results, the results of the ongoing Statewide Rail Framework Study, and on information to be provided by MAG and the Pima Association of Governments (PAG) in regard to the update of their long-range transportation plans and high capacity transit studies. The adopted Statewide Transportation Framework will serve as an important source document for the State's next Long-Range Transportation Plan.





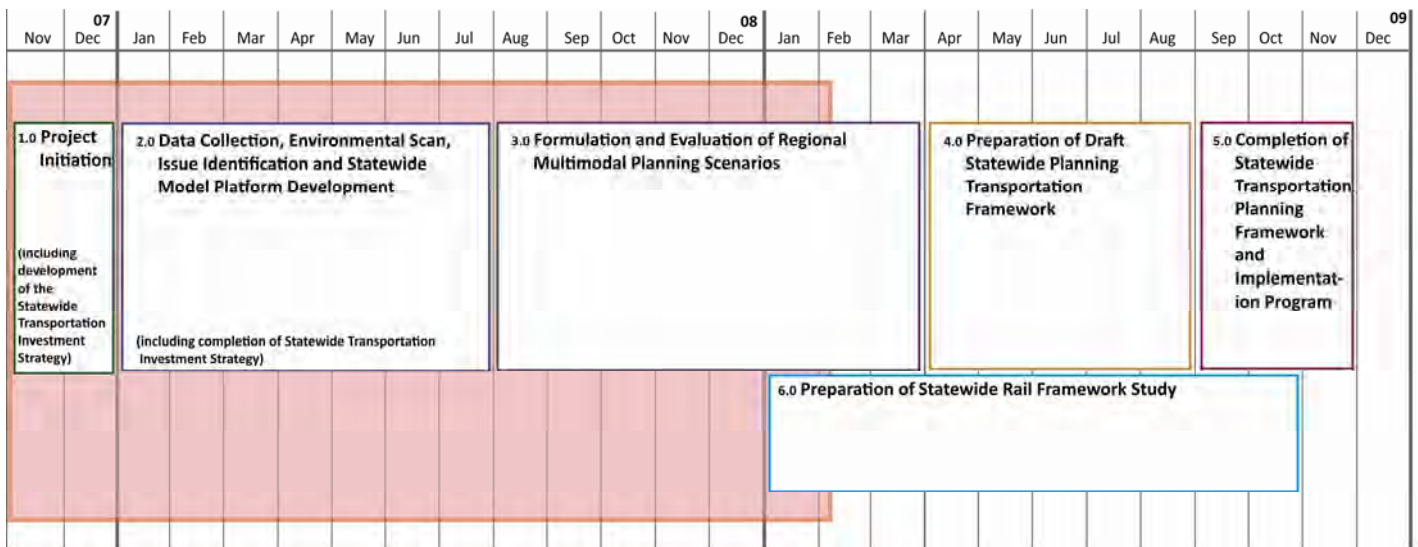
Statewide Transportation Framework Management

The Statewide Transportation Planning Framework Program consists of six key tasks, which include:

- 1.0 Project Initiation (including development of the Statewide Transportation Investment Strategy)
- 2.0 Data Collection, Environmental Scan, Issue Identification and Statewide Model Platform Development (including completion of Statewide Transportation Investment Strategy)
- 3.0 Formulation and Evaluation of Regional Multimodal Planning Scenarios
- 4.0 Preparation of Draft Statewide Planning Transportation Framework
- 5.0 Completion of Statewide Transportation Planning Framework and Implementation Program
- 6.0 Completion of Statewide Rail Framework Study

This Planning Framework Program incorporates other recently developed state policy in the areas of Smart Growth and Climate Change, reflecting the work of the Governor's Smart Growth Cabinet and their Smart Growth Scorecard, as well as the 2006 Climate Change Action Plan.

The timeline to complete these tasks is illustrated below, with color shading illustrating work completed to date.



DRAFT



Key Accomplishments to Date (new items in bold)

The following identifies the key milestones completed to date within the overall Planning Framework Program:

- Completion of Working Paper#1: Regional Framework Study Work Plans - February 29, 2008
- Conduct the first round of statewide workshops to identify issues and discuss existing and future conditions - March 24-27, 2008
- Completion of Draft Critical Needs for the Statewide Transportation Investment Strategy (STIS) - March 31, 2008
- Completion of Working Paper #2: Existing and Future Conditions for each regional framework study area - May 22, 2008
- Preparation of nineteen (19) Revised STIS Scenarios for presentation to the Governor's Office, State Transportation Board (STB), the Statewide COGs/MPOs and the public - February 29 - May 31, 2008
- Completion of Final Critical Needs for the STIS - May 31, 2008
- Prepare for and conduct four (4) regional public hearings by the STB to present and discuss the final STIS: June 4-11, 2008 (Flagstaff, Marana, Phoenix), with adoption by the STB on June 19, 2008 (Tucson)
- Completion of evaluation framework for regional Multimodal Transportation Scenarios - August 19, 2008
- Completion of Statewide Travel Demand Model Population and Employment Projections and Modeling Platform - September 12, 2008
- Completion of regional multimodal transportation scenarios - November 5, 2008
- Completion of the second round of statewide workshops to present regional multimodal transportation scenarios - November 10 - 20, 2008
- Completion of four of five border states DOT coordination meetings-
 - Utah DOT: November 13, 2008
 - Secretaria de Infraestructura y Desarrollo Urbano (SIDUR) & Secretaria de Comunicaciones y Transportes (SCT) with Arizona/Mexico Border Commission Meeting: December 4-5, 2008
 - Nevada DOT/Clark County Regional Transportation Commission: December 11, 2008
 - CALTRANS: December 15, 2008
- **Preparation and publication of Transit Propensity and Regional Transit Demand Briefing Paper (December 2008), with ongoing review throughout January 2009**
- **Preparation and revisions to the Arizona Town Hall Briefing Document: Chapter 4-Rural Transportation, requested by Town Hall organizers (throughout January 2009)**
- **Preparation and revisions to Transportation Funding Options for Arizona Briefing Paper and Presentation to Framework Policy Committee (throughout January 2009)**



Statewide Transportation
Planning Framework

- Preparation for and meet with each regional framework consultant (RFC) to review and coordinate statewide modeling results for incorporation into regional multimodal transportation scenarios evaluation
- Reviewed, critiqued and revised regional framework scenarios evaluation results (throughout 2009 and continuing through March 2009)
- Compiled first draft of statewide transportation planning framework scenarios; reviewed with Project Management Team; incorporated results of border states coordination and revised in anticipation of RTP coordination meetings with PAG and MAG, as well as Common Interest Workshops to be held in February/March 2009
- Initiation of Statewide Rail Framework Study (throughout January, 2009)
 - Drafted internal Project Work Plans, QC/QA Protocols
 - Delivered Working Paper #1, Study Management
 - Initiated GIS base mapping
 - Initiated review and summary of existing data sources
 - Initiated summary of grade crossing issues from ADOT Rail Inventory
 - Initiated strategy for survey to be used with Rail Technical Advisory Team and Other Stakeholders
 - Initiated stakeholder and secondary research for rail passenger and freight forecasting
 - Held first Rail Technical Advisory Team meeting (January 28, 2009)



Next Steps (new items in bold)

- Complete border states DOT outreach
 - **NMDOT: February 25, 2009**
- Conduct Rail Framework Study (January 2009 - October 2009)
 - **Data collection**
 - **Freight and passenger rail travel demand forecasts**
 - **Identification of issues**
 - **Development of rail system alternatives**
 - **Evaluation of rail system alternatives**
 - **Draft and Final Study Recommendations**
- Complete full evaluation of the three Statewide Transportation Framework Scenarios (December 2008 – March 2009)
 - Personal Vehicle Mobility Scenario
 - Transit Mobility Scenario
 - Focused Growth Scenario
- Conduct seven Common Interest Workshops on the three Statewide Transportation Framework Scenarios (February 26-March 9, 2009)
 - Tribal Communities
 - Sustainable Planning Professionals
 - Development Community
 - Natural Resources Community
 - Land Management & Resource Agencies
 - Economic Development Community
 - Major Freight Users
- **Compile and evaluate Statewide Transportation Framework Scenarios (January-March 2009)**
- Develop Draft Recommended Statewide Transportation Framework Scenario (March-April 2009)
- Conduct the third round of Statewide Scenario Workshops to present recommended Statewide Framework Scenario and evaluation results (May-June 2009)
- Draft Statewide Recommended Transportation Framework Scenario and potentially roll out at League of Cities and Towns Annual Meeting (May – July 2009)
- Draft Statewide Recommended Transportation Framework Scenario Implementation Program (July-August 2009)
- Merge work from Final Statewide Recommended Transportation Framework Scenario, Statewide Rail Framework Study and MAG and PAG Regional Transportation Plan Updates into Final Statewide Transportation Planning Framework (August-November 2009)



Work Completed in the Past Month

Work Tasks:

- Facilitated regional multimodal transportation scenarios modeling and evaluation process
- Initiated Rail Framework Study structure, past planning and market research efforts
- Initiated work on transportation finance tools
- Initiated compilation of Statewide Transportation Framework Scenarios

Coordination Meetings:

- January 13, Management Team (MT) and ADOT Senior Management Meetings
- January 15, Initiated monthly rail coordination meetings with MAG
- January 20, MT, Project Management Team (PMT) and ADOT Senior Management Meetings
- January 26, ADOT/Consultant Team Kick-off Meeting for Rail Framework Study
- January 27, MT and ADOT Senior Management Meetings
- January 28, Rail Framework Technical Advisory Team (RTAT) initial meeting
- January 28, MT Meeting to review first draft of Statewide Transportation Planning Framework Scenarios
- February 2, Rail Project Coordination Meeting with ADOT Project Manager to discuss I-10 coordination items
- February 2, Rail Framework weekly coordination meeting
- February 3, Present Statewide Transportation Planning Framework Program Overview at the 2009 Arizona Pavement/Materials Conference
- February 3, PMT Meeting
- February 4, Attend MAG/ADOT Valley Coordination Meeting on Proposition 400 Peer Review Results
- February 5, Project coordination meeting (ADOT PM/MC)
- February 6, PAG coordination meeting to integrate results of ongoing PAG RTP Update and High Capacity Transit Study into Statewide Transportation Planning Framework Scenarios



Upcoming Key Outreach Opportunities

- February 26-27, 2009: Arizona Transit Association's Legislative/Rail Conference 2009
- February 26, 2009: Tribal Communities and Natural Resources Workshops
- March 2, 2009: Development Communities and Sustainable Planning Professionals Workshops
- March 3, 2009: Economic Development and Resource Agencies Workshops
- March 9, 2009: Major Freight Users Workshop
- March 4-5, 2009: Arizona ITE/IMSAs Spring Conference
- April 19-22, 2009: Arizona Town Hall on Transportation

Relationship to Long-Range Transportation Plan

ADOT will initiate the preparation of the legislatively-mandated Long-Range Transportation Plan-2010 (LRTP) early next year, which will use the Statewide Transportation Planning Framework Program as its foundation. The Long-Range Transportation Plan will:

- Use the 40+ year Vision from the Planning Framework Program to Establish the State's Transportation Future
- Use the 20-year Implementation Program as the Basis for the Development of the 20-Year LRTP Cost Constrained Plan