

# Rail Technical Advisory Team

bqAZ Statewide Rail Framework Study  
January 28, 2009

# Agenda

- Introductions
- Study Goals
- Rail Study and the Statewide Transportation Planning Framework
- Role of the Rail TAT
- Scope of the Study
- Schedule
- Communication and Coordination
- LUNCH
- Issues and Opportunities Facilitated Discussion
- Adjourn



## About bqAZ

- Kicked off in December 2007
- Three steps:
  - Critical Needs
  - Regional Frameworks
  - Statewide Framework Program (including rail)
- Rail issues/opportunities identified through Regional Framework processes



## Study Goals

- Address widespread interest in rail as an alternative mode of transportation in the state
- Complement work in MAG and PAG regions on statewide basis
- Provide important component of statewide 50-year transportation vision
- Capture the benefits rail can provide to land use patterns and climate change



## Why Study Rail in Arizona?

- Stimulate responsible economic growth and capture mutual advantages with the RRs
- Facilitate efficient movement of people and goods within and through the state
- Maximize use of existing rail infrastructure
- Compliment other modes in the statewide transportation system
- Address the community's interest in public transportation (ADOT CCP survey)



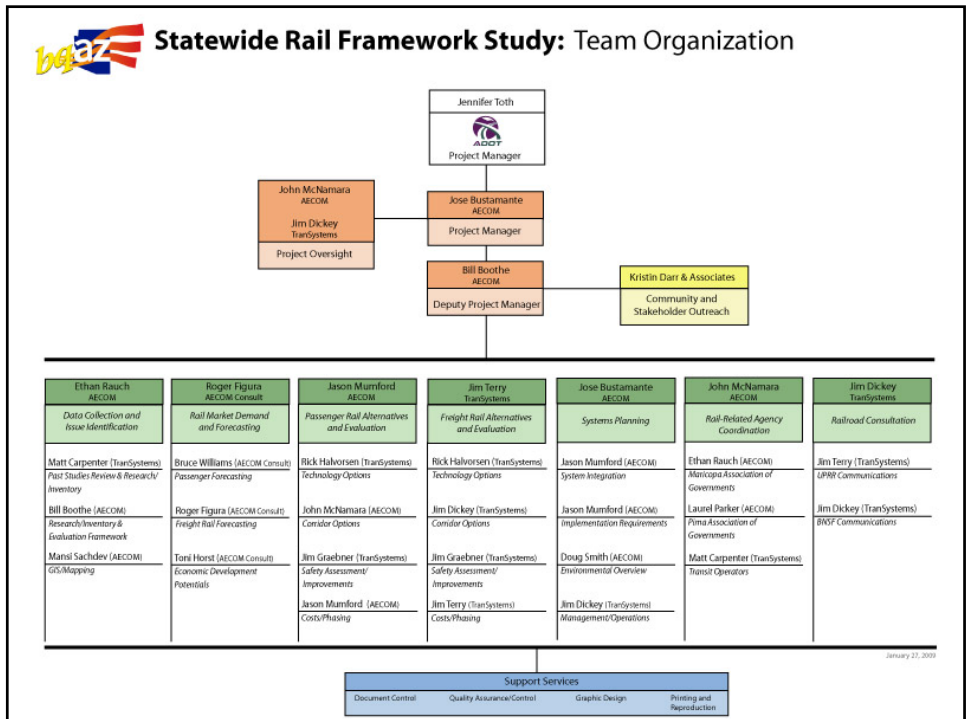
## Major Issues/Opportunities

- Statewide interest in enhancing freight movement (studies, task force)
- International cargo through Mexican ports
- UPRR Red Rock classification yard
- UPRR Sunset Corridor double tracking
- BNSF plans to relocate yards out of Phoenix core
- Potential rail connectivity to new or enhanced industry



# Role of the Rail TAT

- Attend all meetings, in person if possible
- Review meeting materials that are provided in advance and be prepared for discussions
- Provide input to the study as technical advisors
- Represent your organization
- Participate in stakeholder survey
- Identify resources within your organization and help the bqAZ team to access those resources
- Review working papers and provide comments within specified timeframe
- Funnel correspondence to assist in project organization.





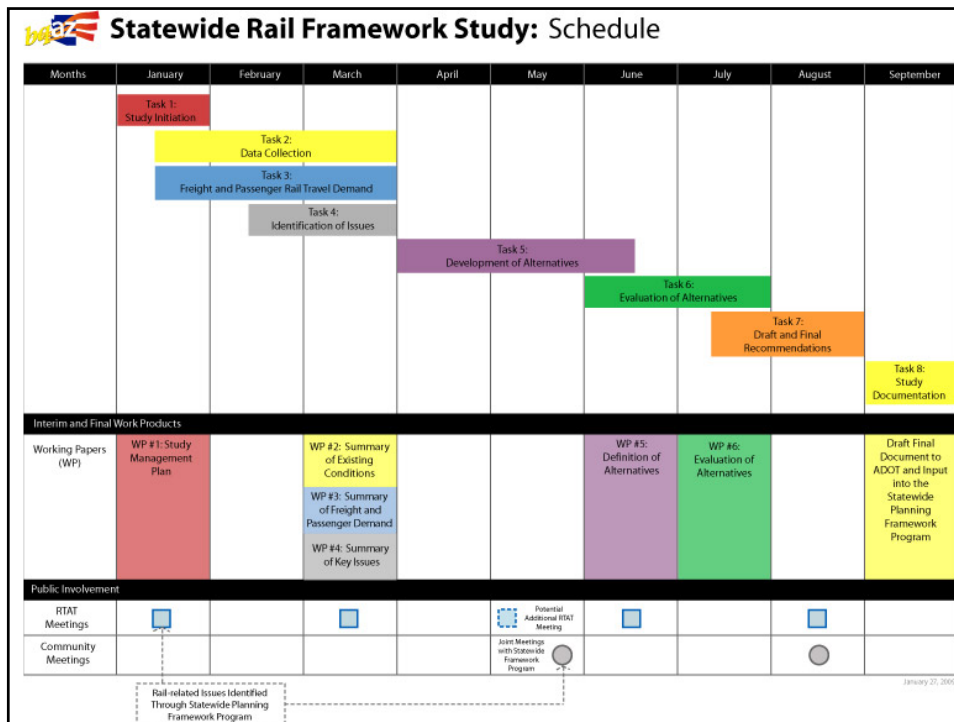
## Project Contacts

- Jennifer Toth, ADOT MPD; 602-712-6790; jtoth@azdot.gov
- Bill Boothe, AECOM; 602-337-2629; bill.boothe@aecom.com
- Kristin Bornstein, KDA Creative; 602-368-9644; kristin@kdacreative.com



## Scope of the Study

- Initiation
- Data Collection
- Forecasting
- Issues Identification
- Development of Alternatives
- Evaluation of Alternatives
- Recommendations and Documentation



**baaz** "Building a Quality Arizona"

Statewide Rail Framework Study

## Issues and Opportunities Discussion

- How do state and federal regulations affect you?
- How can coordination be improved among entities influencing rail issues? What works and doesn't work now, and why?
- What will elicit the attention and commitment of private entities such as railroads and developers in a statewide program?



## Issues and Opportunities Discussion

- How will changes in technology affect your decision-making?
- Are there resources to provide Arizona technological advantages?
- How do rail interests in Arizona fit into the context of regional rail, including the Southwest and Mexico?



## Issues and Opportunities Discussion

- How can Arizona form coalitions with neighboring states to give the region a competitive edge?
- How can the state take advantage of pass-throughs to create economic opportunity?



## Issues and Opportunities Discussion

- What is the best thing that this study can recommend in the short and long term as it affects you?
- If you were advising the Governor and legislature about a successful rail program what would you say?



Next Meeting: March 25, 2009

Thank You