

Building a Quality Arizona Northern Arizona Framework Study Community Workshops



November 2008

Thank you very much for joining us for the Community Workshop. During this brief presentation I will:

- Provide some background on this study and the broad issues related to transportation in Arizona
- Outline the bqAZ process and talk to you about what we are here to accomplish today
- After this presentation we will... Break into small group discussions (tables for each colored comment form)
- You should have four handouts: a general process fact sheet, a fact sheet describing the three scenarios that we will review together today/tonight, a comment form for you to provide us your input on the scenarios, and a meeting evaluation form

Arizona's Transportation Story

- Arizona is growing and the growth is projected to continue
- Construction costs up, transportation revenues down
- Fuel costs increasing, people want more transportation choices!
- Times are changing! We need to keep pace!



Let's talk for a minute about the "transportation story" in Arizona--

The State's population is projected to nearly triple over the next 40 years.

Current transportation funding can not deliver a transportation system necessary to keep Arizona competitive in a global economy, preserve our natural environment and offer residents quality of life. In fact, we are just a few years away from the point at which Arizona can only pay to maintain existing roads.

ADOT projects that by 2015, funding sources will be solely dedicated to operating and preserving our existing highway system.

'Doing nothing' is not an option.

A sustainable, diverse range of funding options is necessary to create the solid transportation infrastructure essential for a robust economy to attract jobs and move people and goods efficiently.

Future transportation system must offer diverse solutions - balanced between urbanized areas and rural areas and between different types of transportation modes.

It is Important to Plan Ahead Now

- We are envisioning our future transportation needs
- We are not selecting projects for funding
- We are requesting input on three possible future transportation scenarios
- The scenarios are conceptual and should not be interpreted as locating actual projects
- This effort will guide future decisions as funding becomes available



This slide is meant to clarify what we are here to accomplish with you. The most important point is that this is conceptual and should not be viewed as specific projects that will be built.

Funding is a challenge that is being addressed at both the state and national level. We want to be ready when funding does become available and have a plan in place that accurately reflects our collective visions as Arizonans and can sustain us into the future with the lifestyle and quality of life we desire.

Process Overview

- Gather from the community big picture issues and ideas (occurred in March 2008)
- Develop evaluation criteria to compare scenarios (Summer/Fall 2008)
- Develop Framework Scenarios (Fall 2008)
- Present scenarios to public and ask for feedback (**We Are Here**)
- Merge feedback into overall recommendations and evaluate (Early 2009)
- Present recommendations to public (Spring 2009)



Projected Population Density



2005 Population Density
6 Million



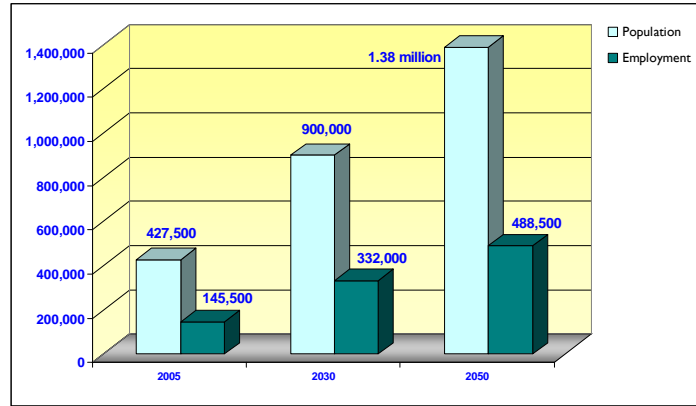
2050 Population Density
14-15 Million

Main Points:

- This is another way to show our projected growth. The 3-D effect indicates where population is anticipated to be more dense.

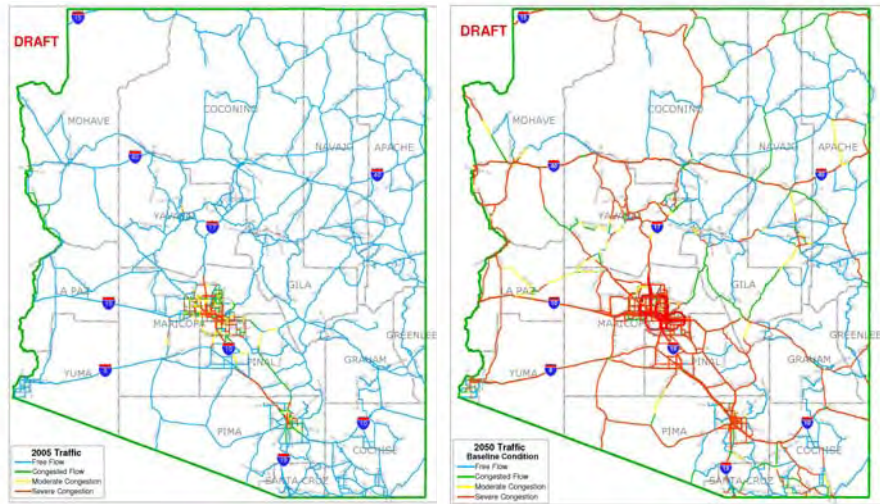
Northern Arizona Framework Study

Population and Employment Estimates



Source: bqAZ Project Team, September 2008

Congestion Projections: Blue is Better!



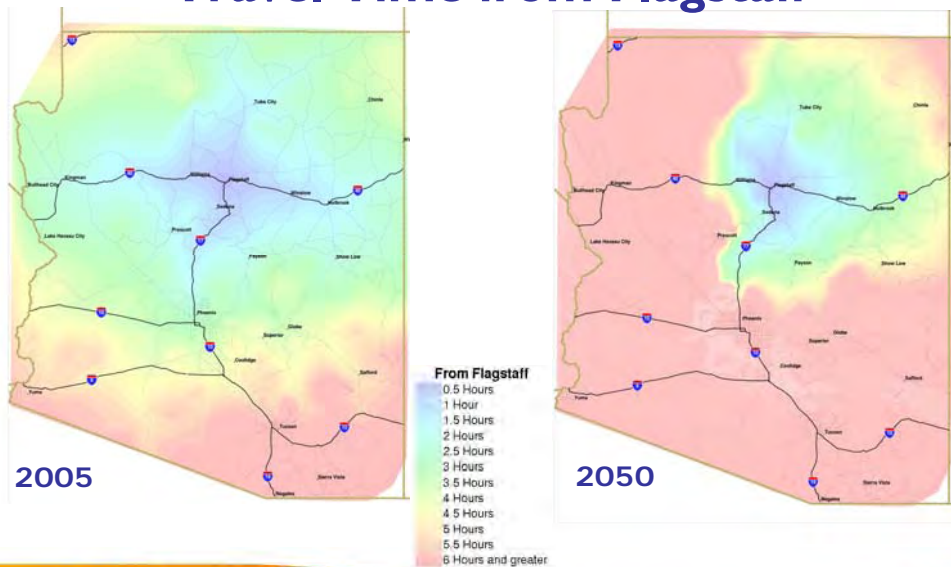
2005 Traffic Congestion

2050 Traffic Congestion

Main Points:

- Another way to show our statewide modeling results: the blue lines represent free flowing traffic and the red represent severe congestion. As you can see, there is much less blue and much more red in 2050.

Travel Time from Flagstaff



Main Points:

- These maps are particularly interesting, showing travel times and how they change in the future with no improvements. The pink area represents more than five hours of travel time. You can see as we grow that it could take more than 5 hours to get to many places around the state when traveling from Flagstaff.

How were the scenarios developed?

- Input from stakeholders and the community
- Small Area Transportation Studies and Local or Regional Transportation Studies
- ADOT Statewide Transportation Investment Strategy
- Critical Needs Report
- Rural Transit Needs Study
- Statewide Travel Demand Model
- Regional Technical Advisory Team

Scenarios address these needs/issues

- Growth
- Traffic congestion
- Regional connectivity
- Public transit utilization
- Truck traffic
- Safety
- Travel options (transit, bike, walk)
- Environmental constraints

FYI...

Planning Goals for Scenarios

- Foster safe and efficient mobility
- Achieve sustainable urban development
- Reduce greenhouse gas production
- Support energy independence (security)
- Improve overall quality of life
- Integrate statutory planning requirements

Common Assumptions

- Each scenario includes multimodal transportation options to varying levels.
- All scenarios address sustainable or smart growth principles to varying levels.
- Build upon the baseline condition (today's current situation) of the statewide transportation system.
 - Includes state, local, and regional existing projects, plus committed funded transportation projects

Baseline Condition:

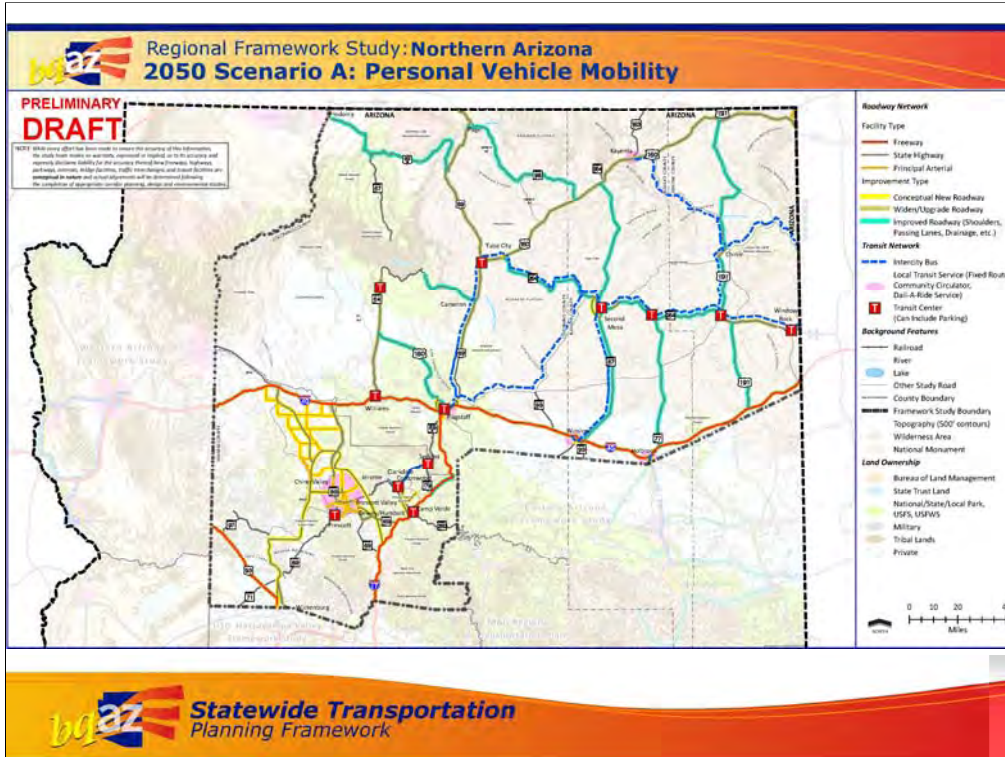
- ADOT 5-Year program and long-term maintenance (existing plus committed network)
- Local and regional Capital Improvement Plans and Transportation Improvement Plans
- Proposition 400 program implementation – MAG Region
- RTA program implementation – PAG Region

Common Assumptions

- Land use is consistent with current local and regional plans
 - Except Scenario C (encourages increased land use densities in certain areas)
- Each scenario is independent of the others.

Scenario A: Personal Vehicle Mobility

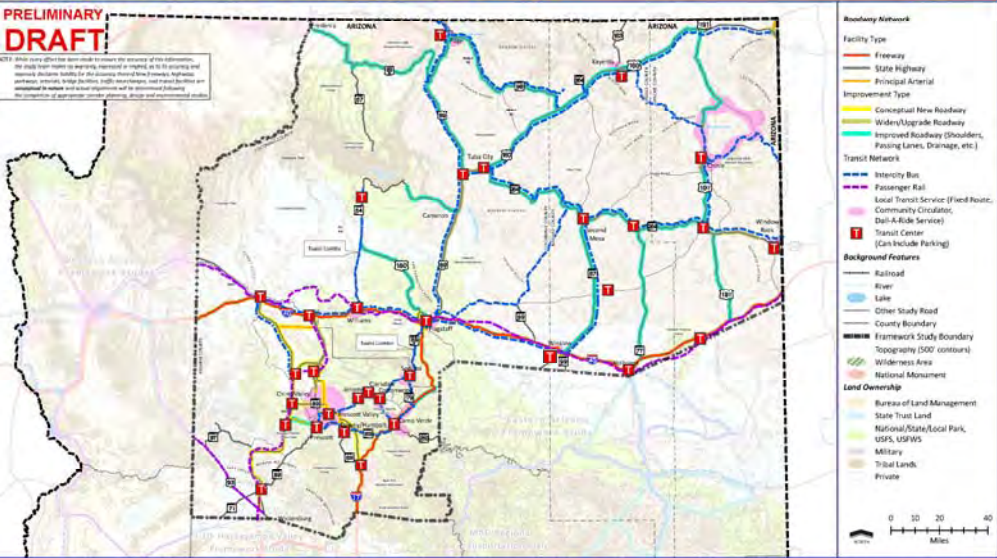
- Assumes that people will continue to drive their cars as their primary mode of transportation.
- Transportation planning and infrastructure improvements similar to today (2008).
- New technologies, such as clean, affordable and abundant fuels, developed for vehicles and available to the average consumer.
- This scenario also contains significant transit improvements.



Scenario B: Transit Mobility

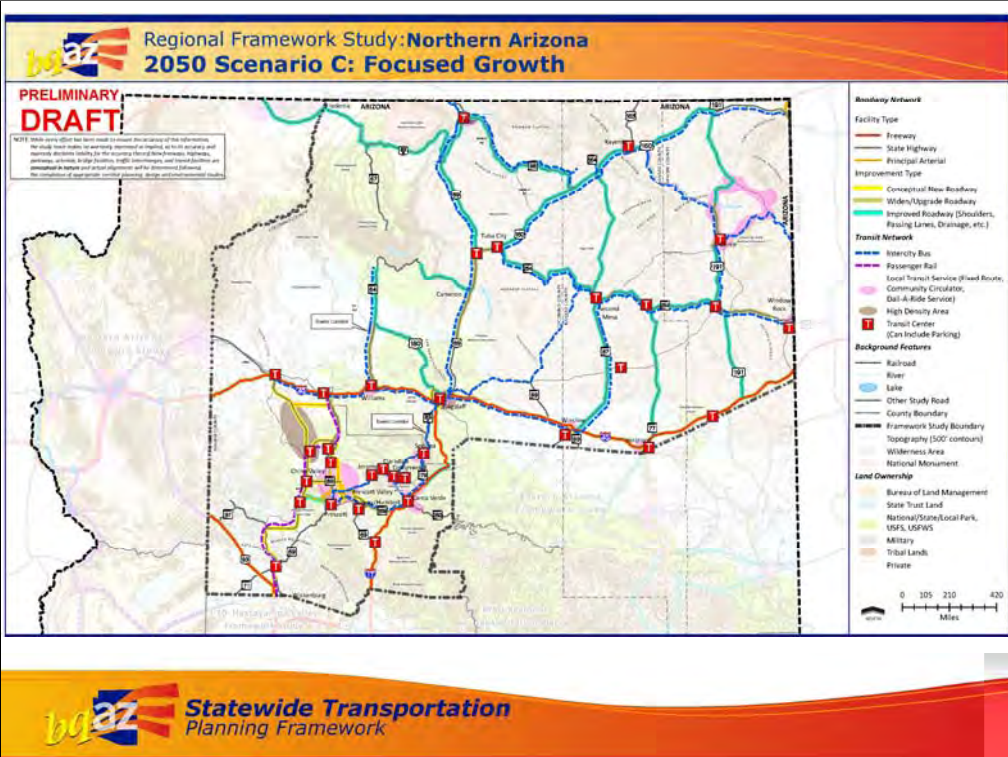
- Shift in focus from personal vehicles to a heavier emphasis on public transit, walking, and bicycling.
- Transit, walking, and bicycling become more prominent choice for regular trips in response to increasing fuel costs and limited improvements in energy technologies.
- Personal vehicles remain an important mode of transportation.

Regional Framework Study: Northern Arizona
2050 Scenario B: Transit Mobility



Scenario C: Focused Growth

- Responds to a growing trend toward a non-auto-dependent lifestyle that encourages a mix of land uses close to one another.
- Improvements located to maximize preservation of environmental, cultural, and scenic values.
- Improvements encourage more compact growth in towns and cities and local travel using transit, bicycling, and walking.
- Continues use of personal vehicles as a primary travel choice with increasing use of advanced technology vehicles.
- Land use consistent with Smart Growth principles (major towns and cities become denser).



Questions for Consideration

- What is your reaction to the assumptions used to craft each scenario?
- What is your reaction to the network improvements identified in each scenario?
- Should ADOT and the project team consider additional information?
- What future issues do you foresee affecting future transportation in the state?



Now we get to the reason we're here tonight... to hear your comments and feedback on the scenarios. We are going to break into small groups and discuss the questions outlined on this slide. Each of you received a colored comment form when you came into the meeting. The tables around the room are matched with the colored comment forms. We will spend the next 90 minutes discussing the 3 scenarios and discussing these questions.

Thank You!
Please visit our website at
www.bqaz.gov