

Building a Quality Arizona Community Workshop



November 2008

Thank you for having me here to speak with you. I am here on behalf of the Arizona Department of Transportation to invite you and encourage your participation in our important statewide planning effort called the Framework Studies.

Hopefully you are familiar with this effort, but if not I have some general information for you that we hope will entice you to participate in this important effort to shape Arizona's future.

ADOT has deployed a large team throughout the state to build excitement for the November workshops. Being just one member of a large team, I may not be able to answer all of your questions; however I will answer questions that I am able to answer and will note those that I may need help answering and ensure that I follow up with you to make sure you have all of the information you need.

Arizona's Transportation Story

- Arizona is growing and the growth is projected to continue
- Construction costs up, transportation revenues down
- Fuel costs increasing, people want more transportation choices!
- Times are changing! We need to keep pace!



Let's talk for a minute about the "transportation story" in Arizona--

The State's population is projected to nearly triple over the next 40 years.

Current transportation funding can not deliver a transportation system necessary to keep Arizona competitive in a global economy, preserve our natural environment and offer residents quality of life. In fact, we are just a few years away from the point at which Arizona can only pay to maintain existing roads.

ADOT projects that by 2015, funding sources will be solely dedicated to operating and preserving our existing highway system.

'Doing nothing' is not an option.

A sustainable, diverse range of funding options is necessary to create the solid transportation infrastructure essential for a robust economy to attract jobs and move people and goods efficiently.

Future transportation system must offer diverse solutions - balanced between urbanized areas and rural areas and between different types of transportation modes.

It is Important to Plan Ahead Now

- We are envisioning our future transportation needs
- We are not selecting projects for funding
- We are requesting input on three possible future transportation scenarios
- The scenarios are conceptual and should not be interpreted as locating actual projects
- This effort will guide future decisions as funding becomes available



In addition to bullet points:

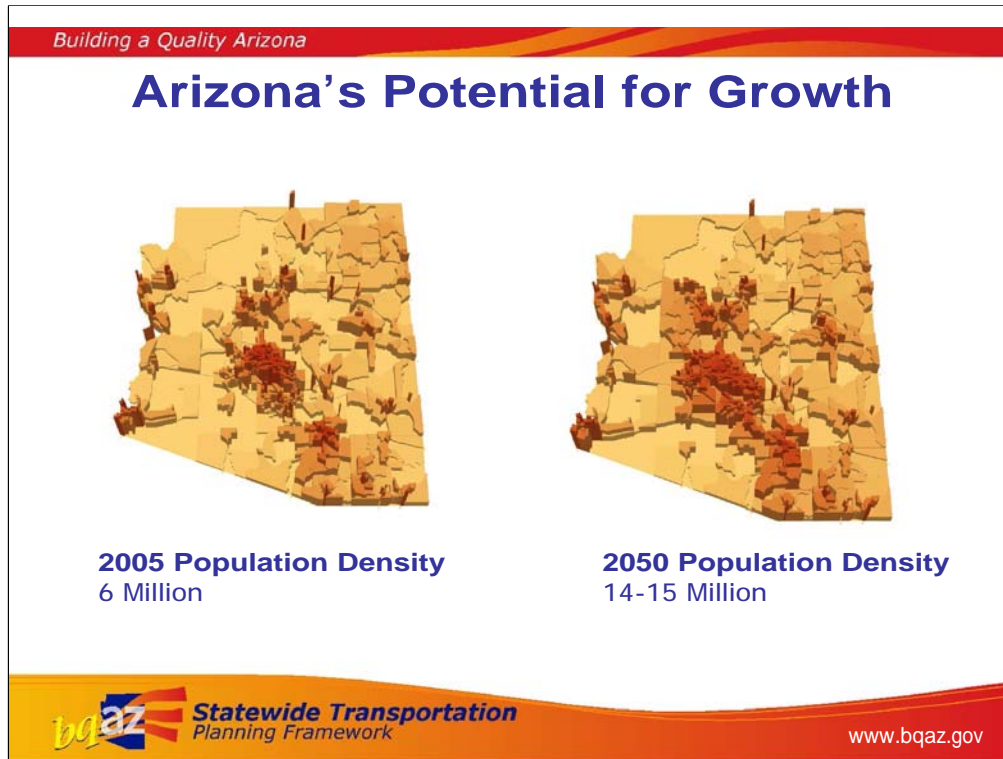
This November we are holding a series of workshops throughout the state for our ongoing “bqAZ” or “Building a Quality Arizona” visioning process. We kicked off this process early in 2008 and this November we will bring ideas of what 2050 could look like for our growing state. We want people to come and participate with us. This is an unprecedented opportunity for Arizonans to work together to shape Arizona’s future for our kids and grandkids

History of the bqAZ Process

- Initiated with statewide reconnaissance study
- First Arizona statewide traffic demand model
- Community workshops in March/April 2008 identified issues such as:

- ✓ Funding
- ✓ Growth
- ✓ Local congestion (on state highways)
- ✓ Regional connectivity
- ✓ More public transit
- ✓ Truck traffic
- ✓ Safety
- ✓ Travel options (transit, bike, walk)

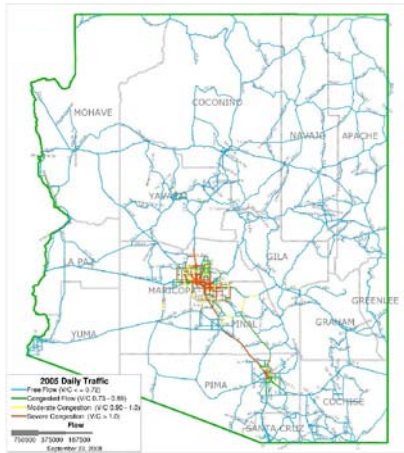




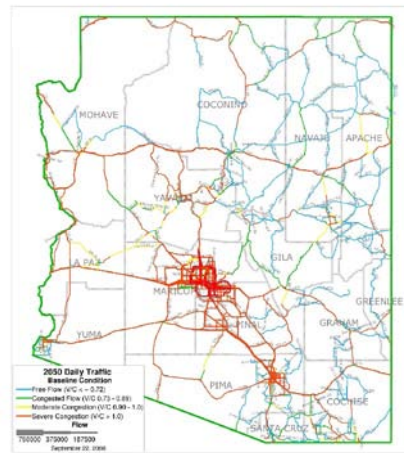
Main Points:

- Using history is a guide, there is strong evidence that AZ will more than double in population by 2050
- If AZ was 16 million today, we'd be the fifth most-populated state in the USA, behind California, Texas, New York, and Florida
- Growth will occur in the present urban core of the state to a megapolitan of more than 14 million in the **Sun Corridor** that stretches from Flagstaff to Nogales
- Advent of this megapolitan demonstrates growth will not stop . . . And doing nothing to improve our infrastructure . . . Especially outside the urban areas . . . **Is not an option!**

Congestion Projections: Blue is Better!



2005 Traffic Congestion



2050 Traffic Congestion

Main Points:

- Another way to show our statewide modeling results: the blue lines represent free flowing traffic and the red represent severe congestion. As you can see, there is much less blue and much more red in 2050.

Process Overview

- Gather from the community issues and ideas (big picture; occurred in March 2008)
- Develop criteria to compare scenarios based on values expressed
- Present scenarios to public and ask for feedback (Today)
- Merge feedback into one overall recommendation (Spring 2009)



Scenarios to be Evaluated: Baseline Condition “plus”

Baseline Condition:

- ADOT 5-Year Program and Long-Term Maintenance (existing plus committed network)
- Local and Regional CIPs and TIPs

“Plus”:

- Scenarios to be evaluated by community at workshops
- Scenarios vary with type and amount of improvement
- Biggest difference is mix of traditional personal vehicle use and transit elements

Common Assumptions

- Each scenario includes multimodal transportation options to varying levels.
- All scenarios address sustainable or smart growth principles to varying levels.
- Land use that the transportation system supports is consistent with current local and regional plans--except Scenario C, which encourages increased land use densities in certain areas.
- Each scenario is independent of the others.

Scenario A: Personal Vehicle Mobility

- Assumes that people will continue to drive their cars as their primary mode of transportation.
- Transportation planning and infrastructure improvements similar to today (2008).
- New technologies, such as clean, affordable and abundant fuels, developed for vehicles and available to the average consumer.
- This scenario also contains significant transit improvements.

Scenario B: Transit Mobility

- Assumes we will drive our cars less and instead there will more use of public transit, walking, and bicycling for regular daily trips.
- We will drive less because of increasing fuel costs and limited improvements in alternative energy technologies.
- Personal vehicles remain an important but secondary mode of transportation.

Scenario C: Focused Growth

- Responds to a growing trend toward a non-auto-dependent lifestyle that encourages a mix of land uses close to one another.
- Improvements located to maximize preservation of environmental, cultural, and scenic values.
- Improvement encourage more compact growth in towns and cities and local travel using transit, bicycling, and walking.
- Continues use of personal vehicles as a primary travel choice with increasing use of advanced technology vehicles.
- Land use consistent with Smart Growth principles (major towns and cities become denser).

Your Participation is CRUCIAL!!

- Arizona is in a defining moment for transportation; we have the ability now to design our future together
- This is the time to get involved
- A critical point in the process: come and review the ideas that have been developed and give us your thoughts!



Although there is not a funding solution on this November's ballot, transportation needs still exist. The people of Arizona, working together, have the opportunity to shape our future quality of life. This is our defining moment. Arizonans need to ask what kind of legacy we will leave our children and grandchildren

Questions for Consideration

1. What is your reaction to the assumptions used to craft each scenario?
2. What is your reaction to the projects identified in each scenario?
3. Please let us know if ADOT and the project team should consider additional information as the project moves forward.
4. What future issues do you foresee affecting future transportation planning in the state?



Thank You!
Please visit our website at

www.bqaz.gov